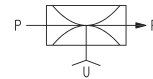
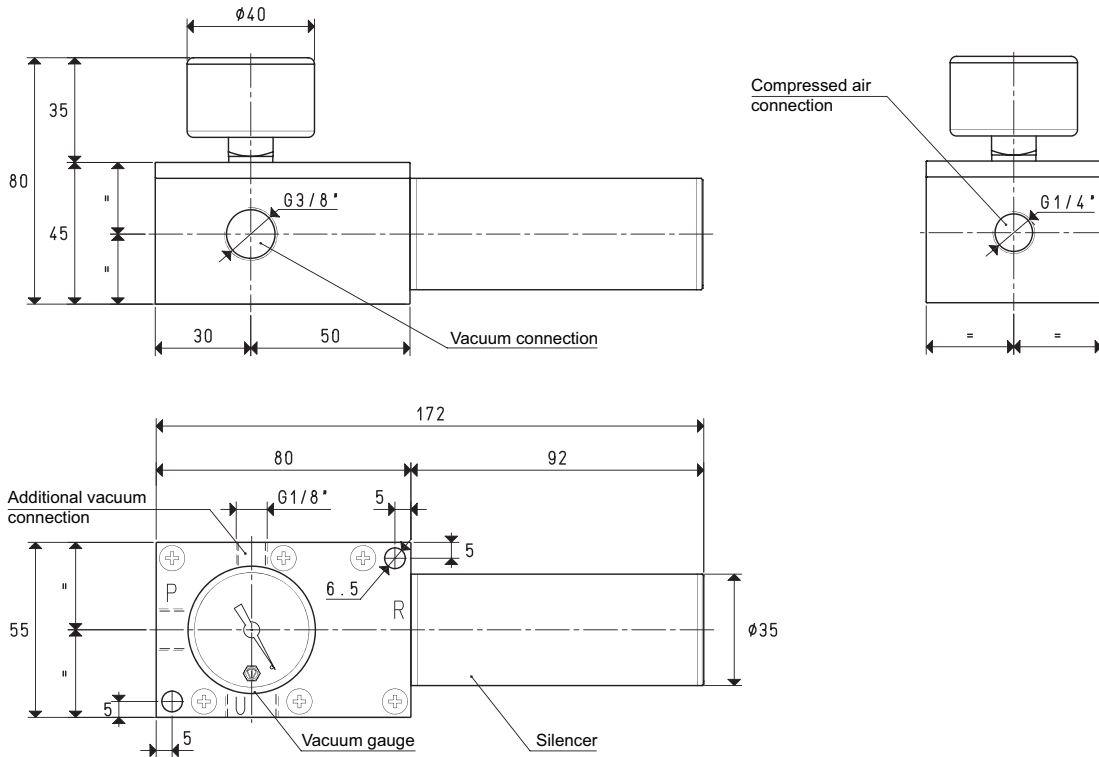


SINGLE-STAGE VACUUM GENERATORS PVP 7 SX

Vacuum generators PVP 7X share the same mechanical and technical features as the previously described ones. Their distinctive feature is a state of the art silencer installed on them and made with natural fibre sound absorbing material contained in a special cylindrical anodised aluminium enclosure open on the exhaust.

This prevents the silencer from being clogged and allows the vacuum generator to suck oil or water condensation saturated fluids mixed with fine and impalpable dust.

They can be used as PVP 7X and, in addition, they can also operate in humid or dusty environments.



3D drawings available at www.vuototecnica.net

	P=COMPRESSED AIR CONNECTION	R=EXHAUST	U=VACUUM CONNECTION
Art.	PVP 7 SX		
Quantity of sucked air	cum/h	8.5	8.8
Max. vacuum level	-kPa	60	73
Final pressure	mbar abs.	400	270
Supply pressure	bar (g)	4	5
Air consumption	NI/s	2.3	2.8
Working temperature	°C	-20 / +80	
Noise level	dB(A)	63	
Weight	g	470	
Spare parts			
Sealing kit	art.		00 15 276
Vacuum gauge	art.		09 03 15
Silencer	art.		SSX 3/4 R

Note: All the vacuum data indicated in the table are valid at the normal atmospheric pressure of 1013 mbar and are obtained with a constant supply pressure.

8.24

Conversion ratio: inch = $\frac{\text{mm}}{25.4}$; pounds = $\frac{\text{g}}{453.6} = \frac{\text{Kg}}{0.4536}$

GAS-NPT thread adapters available at page 1.117

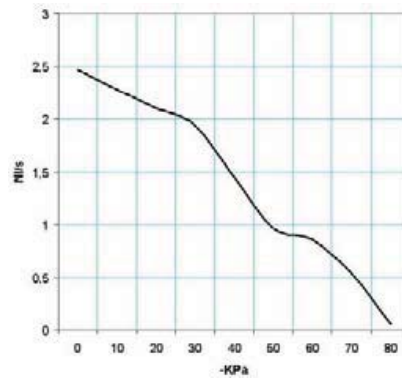


8



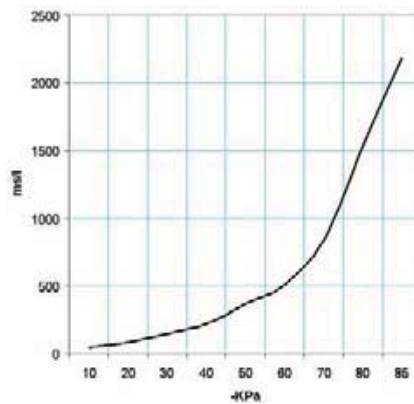
SINGLE-STAGE VACUUM GENERATORS PVP 7 SX

Air capacity (NI/s) at different vacuum levels (-Kpa)



Generator art.	Supply press. bar (g)	Air consumption NI/s	Air capacity (NI/s) at different vacuum levels (-KPa)										Max. vacuum level -KPa
			0	10	20	30	40	50	60	70	80		
PVP 7 SX	6.0	3.2	2.47	2.28	2.10	1.94	1.44	0.97	0.86	0.54	0.05	85	

Evacuation time (ms/l=s/m³) at different vacuum levels (-Kpa)



Generator art.	Supply press. bar (g)	Air consumption NI/s	Evacuation time (ms/l = s/m ³) at different vacuum levels (-KPa)										Max. vacuum level -KPa
			10	20	30	40	50	60	70	80	85		
PVP 7 SX	6.0	3.2	43	86	147	226	365	507	847	1536	2181	85	