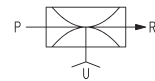
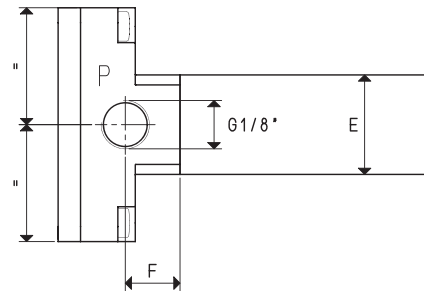
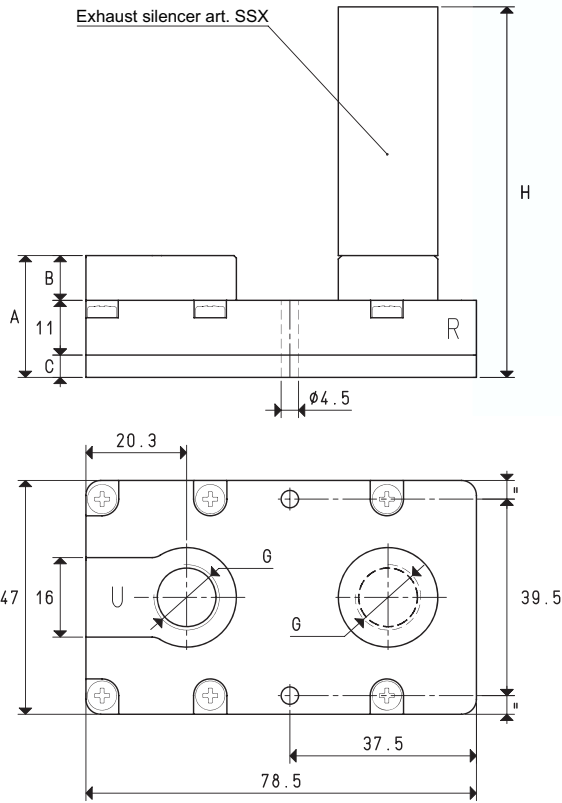


MULTI-STAGE VACUUM GENERATORS SERIES M.. SSX

These vacuum generators share the same technical features as the others of the M series described above. Their distinctive feature is their silent operation.

In fact, along with the built-in silencer, they also have an external SSX silencer for a further noise reduction.

These generators are particularly recommended in work environments where the noise level must be kept within very low values.



P=COMPRESSED AIR CONNECTION R=EXHAUST U=VACUUM CONNECTION

Art.		M 3 SSX					M 7 SSX
Quantity of sucked air	cum/h	3.0	3.4	3.6	5.4	5.8	6.2
Max. vacuum level	-KPa	62	82	85	62	82	85
Final pressure	mbar abs.	380	180	150	380	180	150
Supply pressure	bar (g)	3	4	5	3	4	5
Air consumption	NI/s	0.5	0.7	0.8	0.8	1.2	1.4
Working temperature	°C			-10 / +80			-10 / +80
Noise level	dB(A)			52			58
Weight	g			109			111
A				24.5			25.5
B				9			10
C				4.5			4.5
E	∅			20			29
F				11			12
G	∅			G1/4"			G3/8"
H				74.5			97.5
Spare parts							
Silencer	art.			SSX 1/4"			SSX 3/8"
Sealing kit and reed valve	art.			00 KIT M 3			00 KIT M 7

Note: All the vacuum data indicated in the table are valid at the normal atmospheric pressure of 1013 mbar and are obtained with a constant supply pressure.

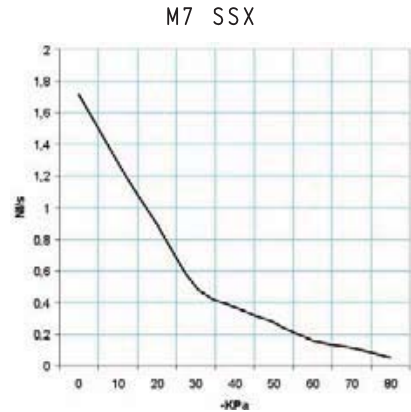
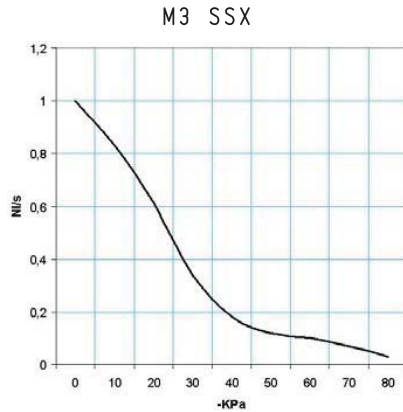
Conversion ratio: inch = $\frac{\text{mm}}{25.4}$; pounds = $\frac{\text{g}}{453.6}$ = $\frac{\text{Kg}}{0.4536}$

GAS-NPT thread adapters available at page 1.117

3D drawings available at www.vuototecnica.net

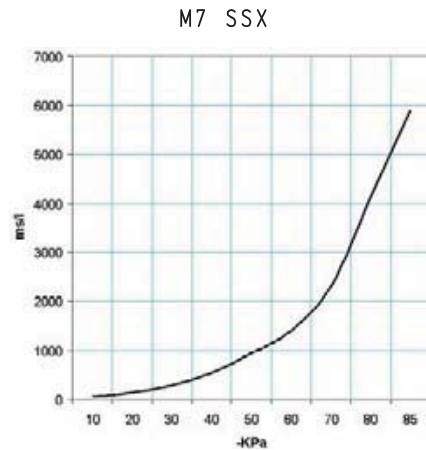
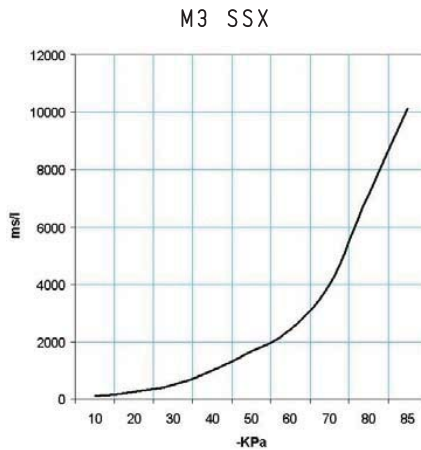
MULTI-STAGE VACUUM GENERATORS M 3 SSX and M 7 SSX

Air capacity (NI/s) at different vacuum levels (-Kpa)



Generator art.	Supply press. bar (g)	Air consumption NI/s	Air capacity (NI/s) at different vacuum levels (-KPa)										Max. vacuum level -KPa
			0	10	20	30	40	50	60	70	80	85	
M 3 SSX	5.0	0.8	1.00	0.83	0.61	0.34	0.18	0.12	0.10	0.07	0.03	85	
M 7 SSX	5.0	1.4	1.72	1.28	0.89	0.50	0.37	0.27	0.16	0.11	0.05	85	

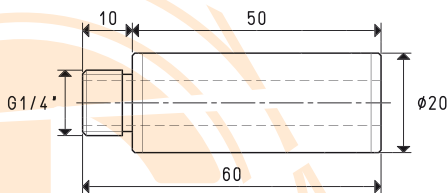
Evacuation time (ms/l= s/m^3) at different vacuum levels (-Kpa)



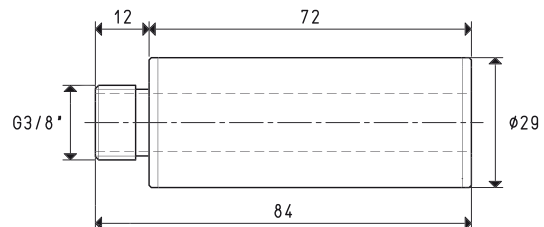
Generator art.	Supply press. bar (g)	Air consumption NI/s	Evacuation time (ms/l = s/m^3) at different vacuum levels (-KPa)								Max. vacuum level -KPa	
			10	20	30	40	50	60	70	80		85
M 3 SSX	5.0	0.8	106	244	491	969	1642	2398	4004	7128	10122	85
M 7 SSX	5.0	1.4	61	142	285	563	954	1394	2328	4144	5885	85

Accessories included

Silencer art. SSX 1/4" on M3



Silencer art. SSX 3/8" on M7



3D drawings available at www.vuototecnica.net

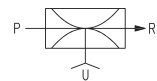
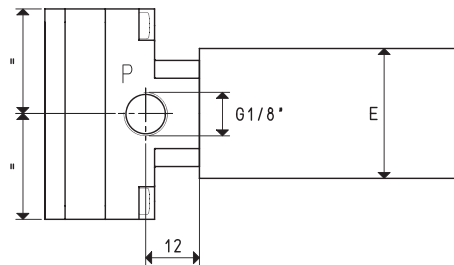
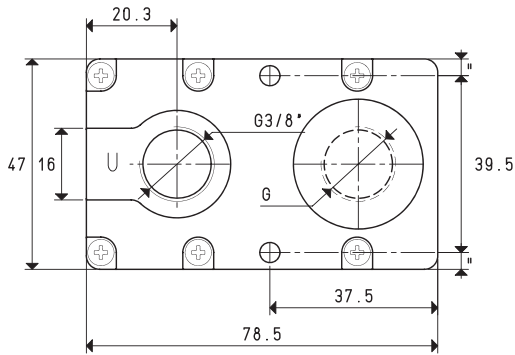
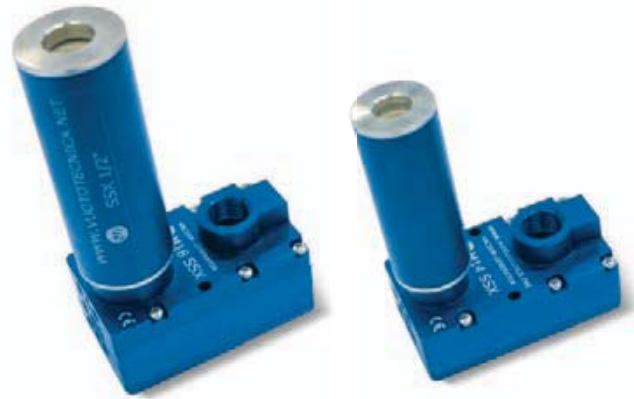
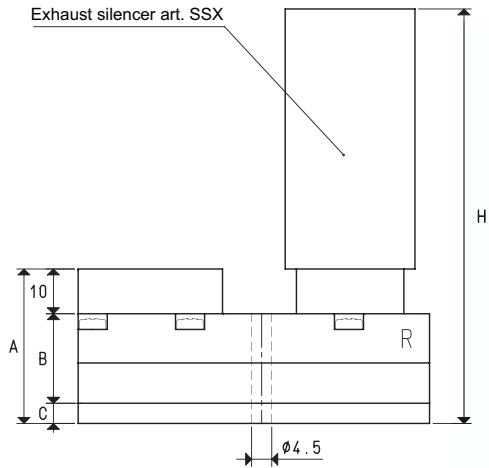
8.34

Conversion ratio: inch = $\frac{mm}{25.4}$; pounds = $\frac{g}{453.6} = \frac{Kg}{0.4536}$

GAS-NPT thread adapters available at page 1.117



MULTI-STAGE VACUUM GENERATORS M 10 SSX, M 14 SSX and M 18 SSX



Art.		P=COMPRESSED AIR CONNECTION			R=EXHAUST			U=VACUUM CONNECTION		
		M 10 SSX	M 14 SSX	M 18 SSX	M 10 SSX	M 14 SSX	M 18 SSX	M 10 SSX	M 14 SSX	M 18 SSX
Quantity of sucked air	cum/h	7.7	8.5	9.4	10.2	11.5	12.6	14.8	16.5	18.0
Max. vacuum level	-kPa	62	82	85	62	82	85	62	82	85
Final pressure	mbar abs.	380	180	150	380	180	150	380	180	150
Supply pressure	bar (g)	3	4	5	3	4	5	3	4	5
Air consumption	NI/s	1.2	1.6	1.9	1.7	2.1	2.5	2.3	2.9	3.6
Working temperature	°C			-10 / +80				-10 / +80		
Noise level	dB(A)			60				62		
Weight	g			144				145		
A				34.5				34.5		
B				20				20		
C				4.5				4.5		
E	Ø			29				29		
G	Ø			G3/8"				G3/8"		
H				106.5				106.5		
Spare parts										
Silencer	art.			SSX 3/8"				SSX 3/8"		
Sealing kit and reed valve	art.			00 KIT M 10				00 KIT M 14		

Note: All the vacuum data indicated in the table are valid at the normal atmospheric pressure of 1013 mbar and are obtained with a constant supply pressure.

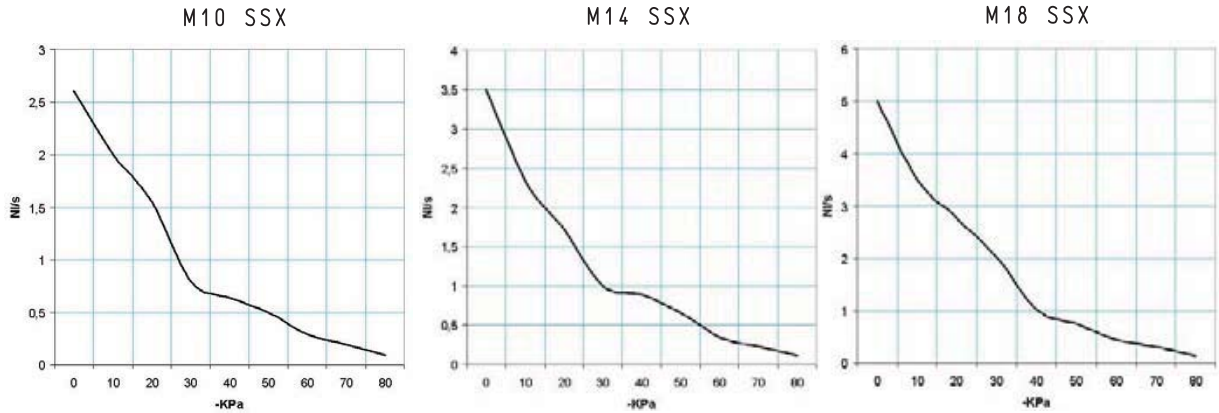
Conversion ratio: inch = $\frac{\text{mm}}{25.4}$; pounds = $\frac{\text{g}}{453.6} = \frac{\text{Kg}}{0.4536}$

GAS-NPT thread adapters available at page 1.117

3D drawings available at www.vuototecnica.net

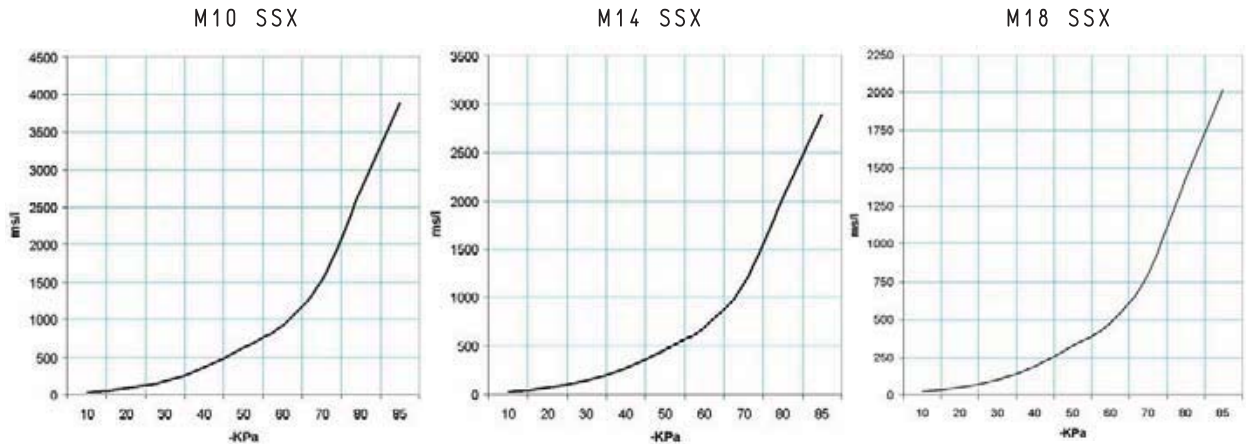
MULTI-STAGE VACUUM GENERATORS M 10 SSX, M 14 SSX and M 18 SSX

Air capacity (NI/s) at different vacuum levels (-Kpa)



Generator art.	Supply press. bar (g)	Air consumption NI/s	Air capacity (NI/s) at different vacuum levels (-KPa)										Max. vacuum level -KPa
			0	10	20	30	40	50	60	70	80	85	
M 10 SSX	5.0	1.9	2.61	2.00	1.55	0.80	0.64	0.50	0.29	0.19	0.09	85	
M 14 SSX	5.0	2.5	3.50	2.33	1.72	1.00	0.89	0.67	0.35	0.24	0.11	85	
M 18 SSX	5.0	3.6	5.00	3.50	2.78	2.02	1.02	0.75	0.44	0.30	0.14	85	

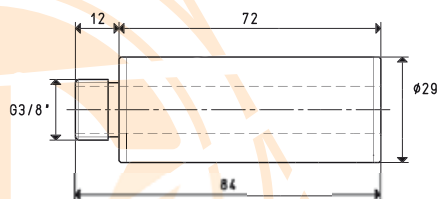
Evacuation time (ms/l=s/m³) at different vacuum levels (-Kpa)



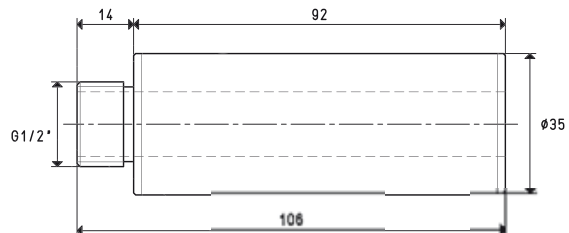
Generator art.	Supply press. bar (g)	Air consumption NI/s	Evacuation time (ms/l = s/m ³) at different vacuum levels (-KPa)										Max. vacuum level -KPa
			10	20	30	40	50	60	70	80	85		
M 10 SSX	5.0	1.9	40	93	188	371	629	918	1534	2731	3878	85	
M 14 SSX	5.0	2.5	30	69	140	276	469	685	1144	2036	2892	85	
M 18 SSX	5.0	3.6	21	48	98	193	327	478	799	1423	2020	85	

Accessories included

Silencer art. SSX 1/2" on M10 and M14



Silencer art. SSX 1/2" on M18



3D drawings available at www.vuototecnica.net

8.36

Conversion ratio: inch = $\frac{mm}{25.4}$; pounds = $\frac{g}{453.6} = \frac{Kg}{0.4536}$

GAS-NPT thread adapters available at page 1.117



8

