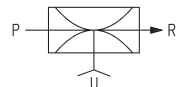
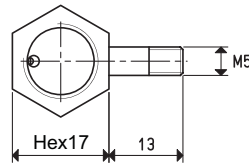
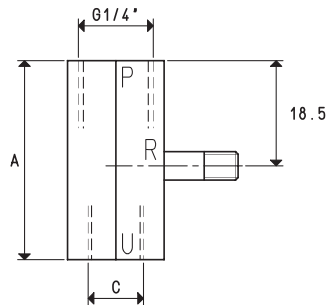


## IN-LINE SINGLE-STAGE VACUUM GENERATORS GV 1, GV 2 and GV 3

The operation of these vacuum generators is also based on the Venturi principle.

Their distinctive feature compared with traditional vacuum generators are the two air and vacuum supply connections located in-line, while the exhaust connection of the sucked and exhaust air is orthogonal to them.

The advantages of these generators include reduced overall dimensions, easy maintenance and easy assembly. These vacuum generators can be assembled directly onto the vacuum cup supports or vacuum cup holders. They are fully made with anodised aluminium, except for the exhaust nozzle which is made with brass.



3D drawings available at [www.vuototecnica.net](http://www.vuototecnica.net)

Art.		P=COMPRESSED AIR CONNECTION		R=EXHAUST		U=VACUUM CONNECTION			
		GV1	GV2	GV1	GV2	GV1	GV2	GV3	
Quantity of sucked air	cum/h	1.0	1.0	1.0	1.0	1.0	1.0	1.0	1.0
Max. vacuum level	-KPa	60	75	85	60	75	85	60	75
Final pressure	mbar abs.	400	250	150	400	250	150	400	250
Supply pressure	bar (g)	3	4	5	3	4	5	3	4
Air consumption	NI/s	0.5	0.6	0.7	0.5	0.6	0.7	0.5	0.6
Working temperature	°C			-20 / +80			-20 / +80		
Noise level	dB(A)			70			70		
Weight	g			19			20		
A				30			35		
C	Ø			M5			G1/8"		
									G1/4"

**Note:** All the vacuum data indicated in the table are valid at the normal atmospheric pressure of 1013 mbar and are obtained with a constant supply pressure.

8.14

Conversion ratio: inch =  $\frac{\text{mm}}{25.4}$ ; pounds =  $\frac{\text{g}}{453.6} = \frac{\text{Kg}}{0.4536}$

GAS-NPT thread adapters available at page 1.117

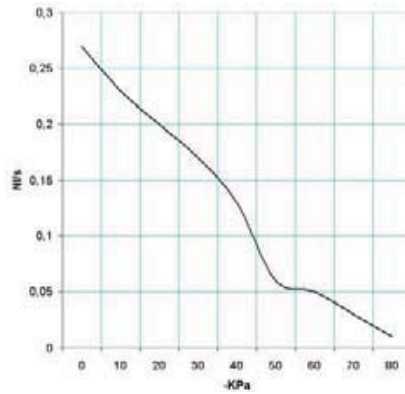


8



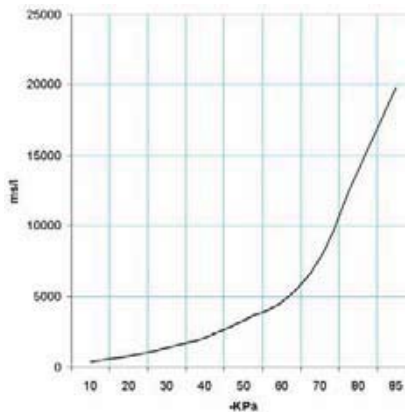
# IN-LINE SINGLE-STAGE VACUUM GENERATORS GV 1, GV 2 and GV 3

Air capacity (NI/s) at different vacuum levels (-Kpa)



Generator art.	Supply press. bar (g)	Air consumption NI/s	Air capacity (NI/s) at different vacuum levels (-KPa)										Max. vacuum level -KPa
			0	10	20	30	40	50	60	70	80		
<b>GV1 - GV2 - GV3</b>	5.0	0.7	0.27	0.23	0.20	0.17	0.13	0.06	0.05	0.03	0.004	85	

Evacuation time (ms/l=s/m³) at different vacuum levels (-Kpa)



Generator art.	Supply press. bar (g)	Air consumption NI/s	Evacuation time (ms/l = s/m³) at different vacuum levels (-KPa)										Max. vacuum level -KPa
			10	20	30	40	50	60	70	80	85		
<b>GV1 - GV2 - GV3</b>	5.0	0.7	394	788	1339	2063	3322	4617	7711	13973	19841	85	