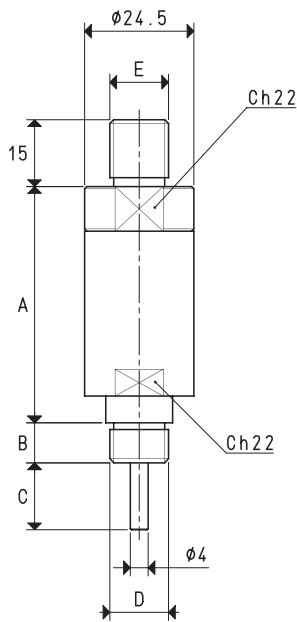
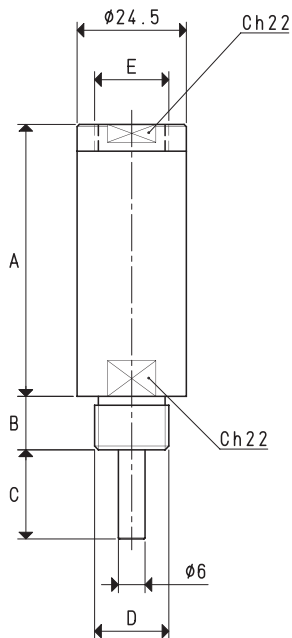


PLUNGER VALVES

Plunger valves are composed of a cylindrical brass body, a steel plunger with a conical valve and a thrust spring. Connected to vacuum, they are normally closed. They activate suction, thus creating vacuum, only when the plunger is in contact with the gripping surface. They are available in various versions, all suitable for our vacuum cups.



Art.	A	B	C	D Ø	E Ø	Weight g	Cup art.
19 01 10	53	9	15.0	G1/4"	G1/4"	160	08 150 16
19 01 11	53	9	15.0	M12	G1/4"	166	08 80 20
19 01 12	53	9	21.5	M12	G1/4"	152	08 127 15



Art.	A	B	C	D Ø	E Ø	Weight g	Cup art.
19 02 10	61	12	20	G3/8"	G3/8"	164	08 150 15 08 200 10 08 250 10
19 03 10	61	10	22	G1/2"	G3/8"	172	08 300 10 08 350 10
19 04 10	68	10	40	G1/2"	G3/8"	182	08 360 10

Conversion ratio: inch = $\frac{\text{mm}}{25.4}$; pounds = $\frac{\text{g}}{453.6} = \frac{\text{Kg}}{0.4536}$

GAS-NPT thread adapters available at page 1.117